



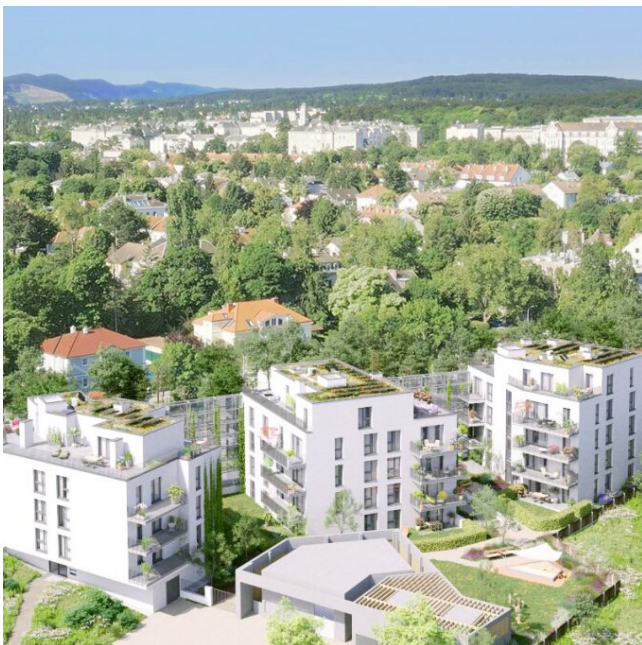
DAS NOAH+ STIEGE 1 / TOP 9

Adresse: 1130 Wien - Lainzerstraße 172/1
Zimmer: 2
Geschoß: 2. OG
Fläche: 50,45 m²
Freifläche(n): 7 m² Balkon
Ausrichtung: Osten, Westen
Fertigstellung: Frühling 2024

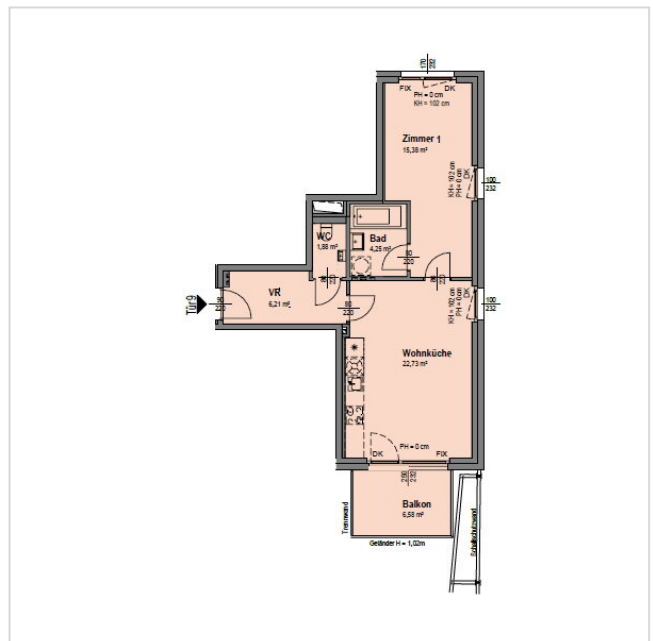
Kaufpreis brutto: € 377.700
Monatliche Kosten: € 182,36

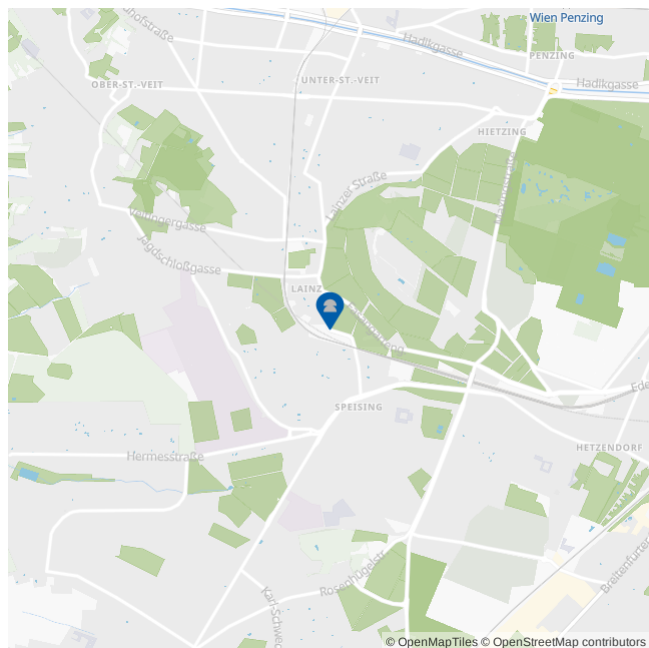
Nutzungsart: Wohnen (Eigentum)
HWB: 29,40 kWh/m²a
f_{GEE} 0,76





PROJEKT BILD



GRUNDRISS



**LAGE & UMGEBUNG** | 1130 Wien - Lainzerstraße 172/1

-  Buslinien 56A,56B,N60 < 100 m
Straßenbahn 60,62 < 100 m
-  Supermärkte < 500 m
-  Krankenhaus Hietzing < 2 km
-  Öffentl. Parks < 1 km