

DAS NOAH+ STIEGE 1 / TOP 13

Adresse: 1130 Wien - Lainzerstraße 172/1

Zimmer: 2

Geschoß: 3. OG

Fläche: 50,45 m²Freifläche(n): 7 m² Balkon

Ausrichtung: Osten, Westen

Fertigstellung: Frühling 2024

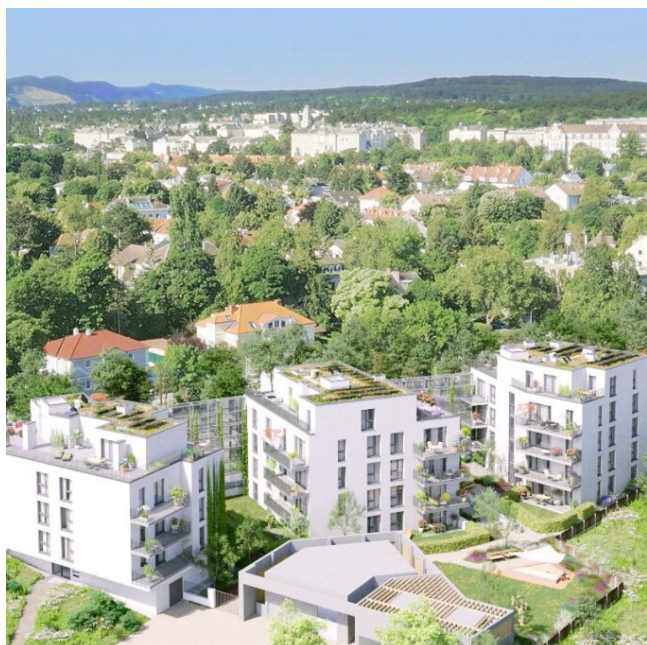
Kaufpreis brutto: € 388.100

Monatliche Kosten: € 192,89

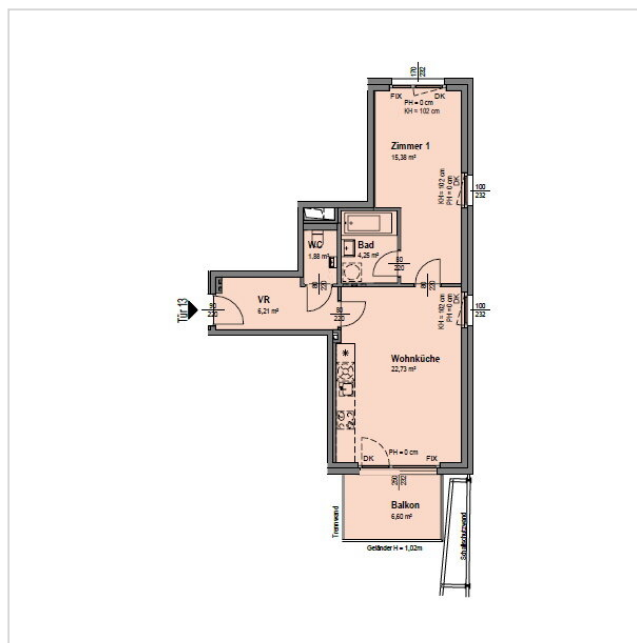
Nutzungsart: Wohnen (Eigentum)

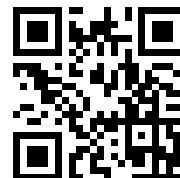
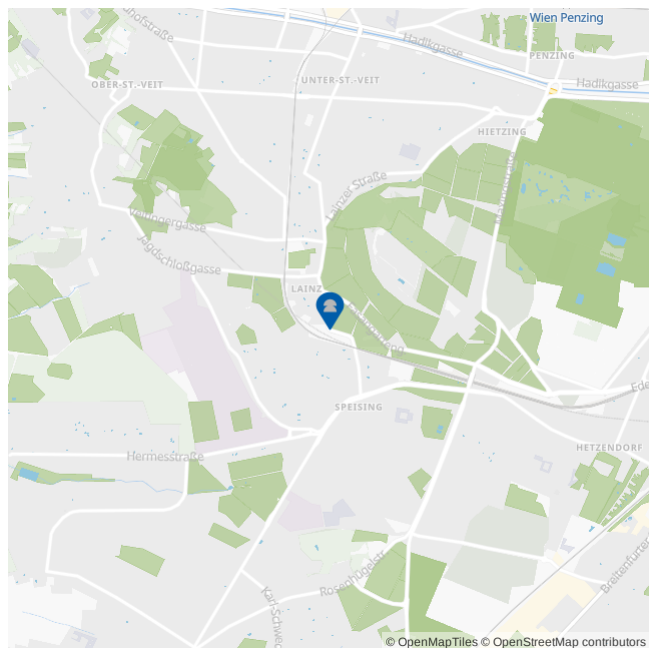
HWB: 29,40 kWh/m²af_{GEE} 0,76





PROJEKTBILD



GRUNDRISS



**LAGE & UMGEBUNG** | 1130 Wien - Lainzerstraße 172/1

-  Buslinien 56A,56B,N60 < 100 m
Straßenbahn 60,62 < 100 m
-  Supermärkte < 500 m
-  Krankenhaus Hietzing < 2 km
-  Öffentl. Parks < 1 km